



Accessible. Concise. Reliable.





What is Sanford Guide?

- Concise clinical reference
- Infectious diseases
- Started as book in 1969
- Books, apps, web site, API
- #1 on Amazon, Google Play, Apple App Store, etc.
- >25 million aggregate sales
- ~1 million users

Accessible. Concise. Reliable.



Who Uses Sanford Guide?

- Inpatient
- Outpatient
- Hospitalists
- Specialists
- General Practitioners
- Family Medicine Providers
- Physicians
- Physician Assistants
- Pharmacists
- Nurse Practitioners
- Microbiologists
- Infection Prevention & Epidemiology

Accessible. Concise. Reliable.

Stewardship Challenges



- Communicating ASP messages to prescribers
- Alert fatigue
- Localized antibiogram = major time/\$ investment
- How to get prescribers to use local data
- Antibiogram doesn't tell full story

Stewardship Challenges



A recent study investigated antibiotic prescribing decisions among a group of medical residents.

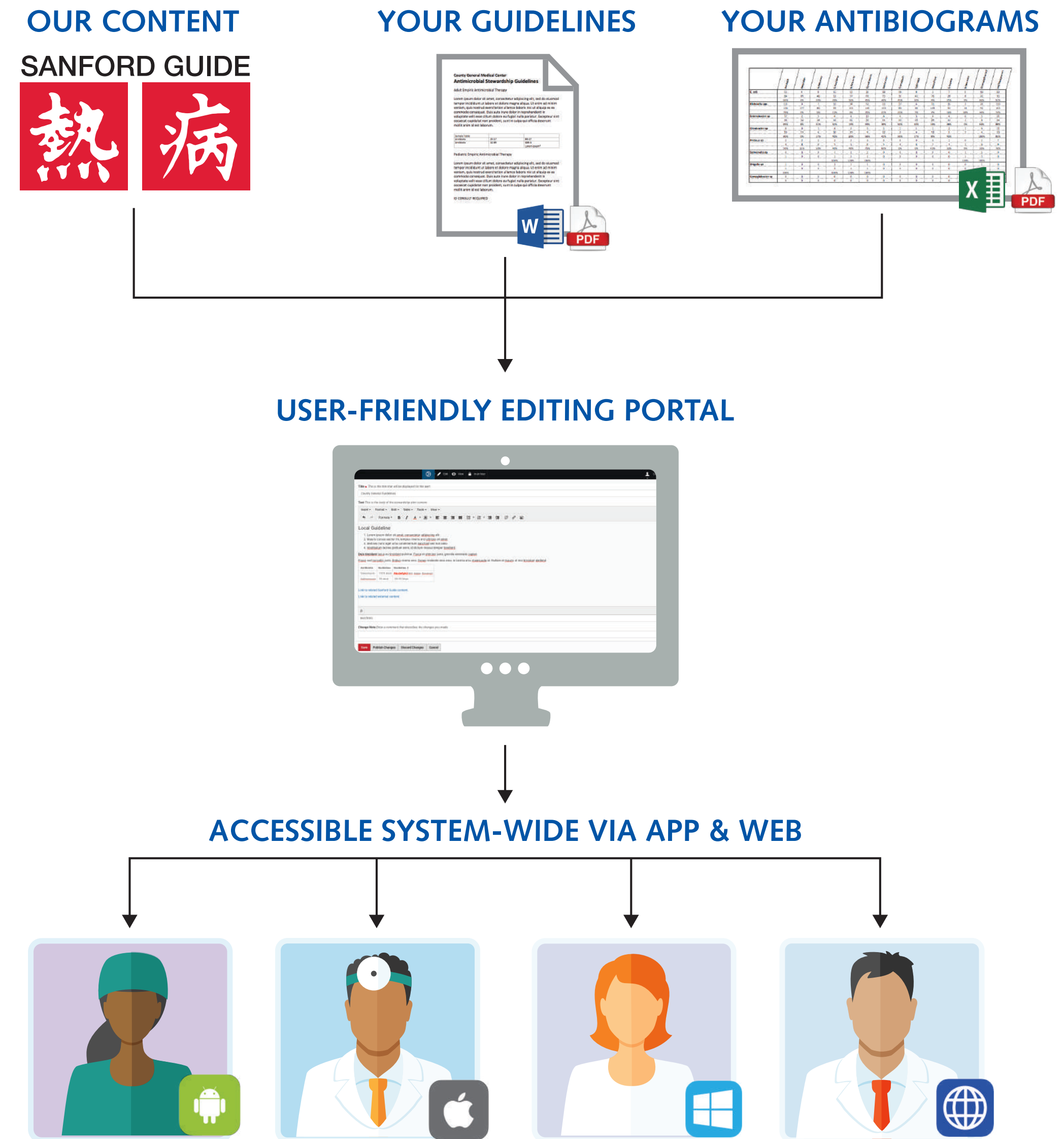
The study showed that:

- 72% of residents relied on Sanford Guide for the selection of empiric therapy
- 90% of residents were aware of institutional antibiograms, but only
- 44% know how to access them.

Tallman et al, Infect Control Hosp Epidemiol. 2018 Mar 1:1-6. [Epub ahead of print].

熱病 SANFORD GUIDE with Stewardship Assist

- Display local antibiograms w/ notes
- Display multiple antibiograms
- Display stewardship recommendations on any page
- Create site-specific pages and content
- Disseminate stewardship recommendations without the need for in-house development or IT support

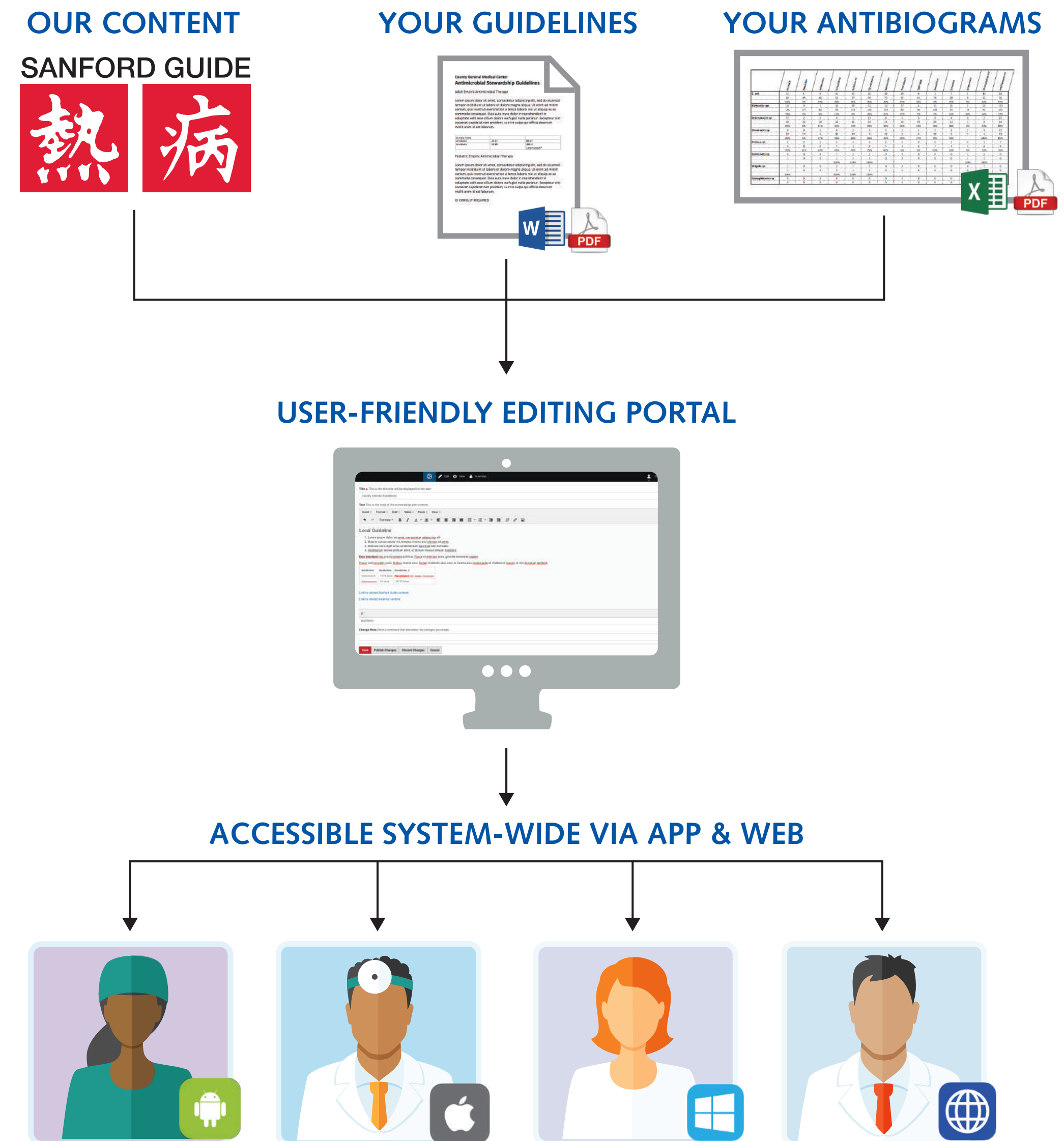


Accessible. Concise. Reliable.

熱病 SANFORD GUIDE with Stewardship Assist

What's Included:

- System-wide access
- Full suite of Sanford Guide content (w/ updates)
- Access content via iOS, Android, & web
- Transfer of guidelines & antibiograms
- Tools to add or change content at any time
- Support for web pages, PDFs, images, algorithms
- Training for your editorial team
- Access to usage data to target interventions

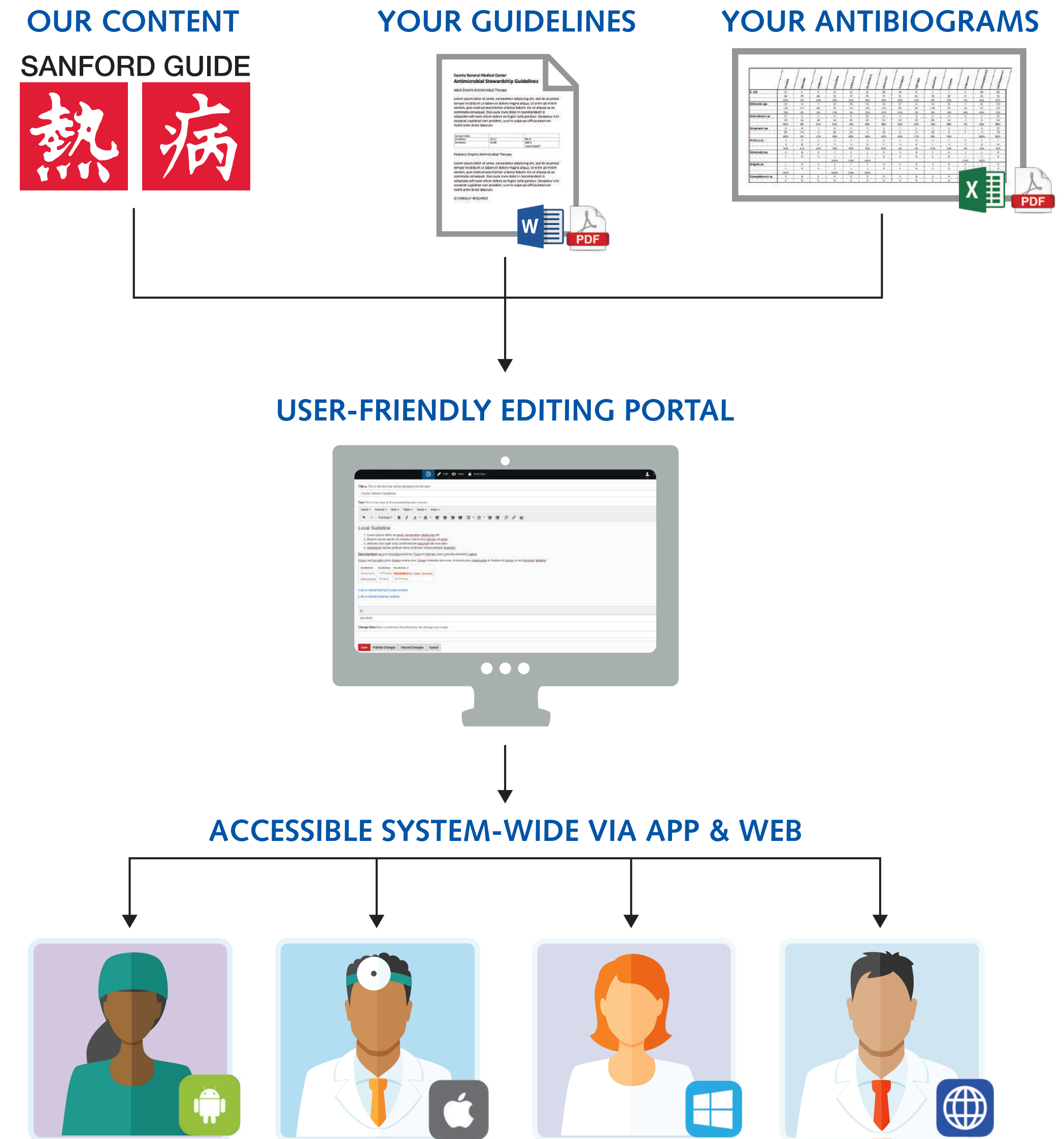


Accessible. Concise. Reliable.

熱病 SANFORD GUIDE with Stewardship Assist

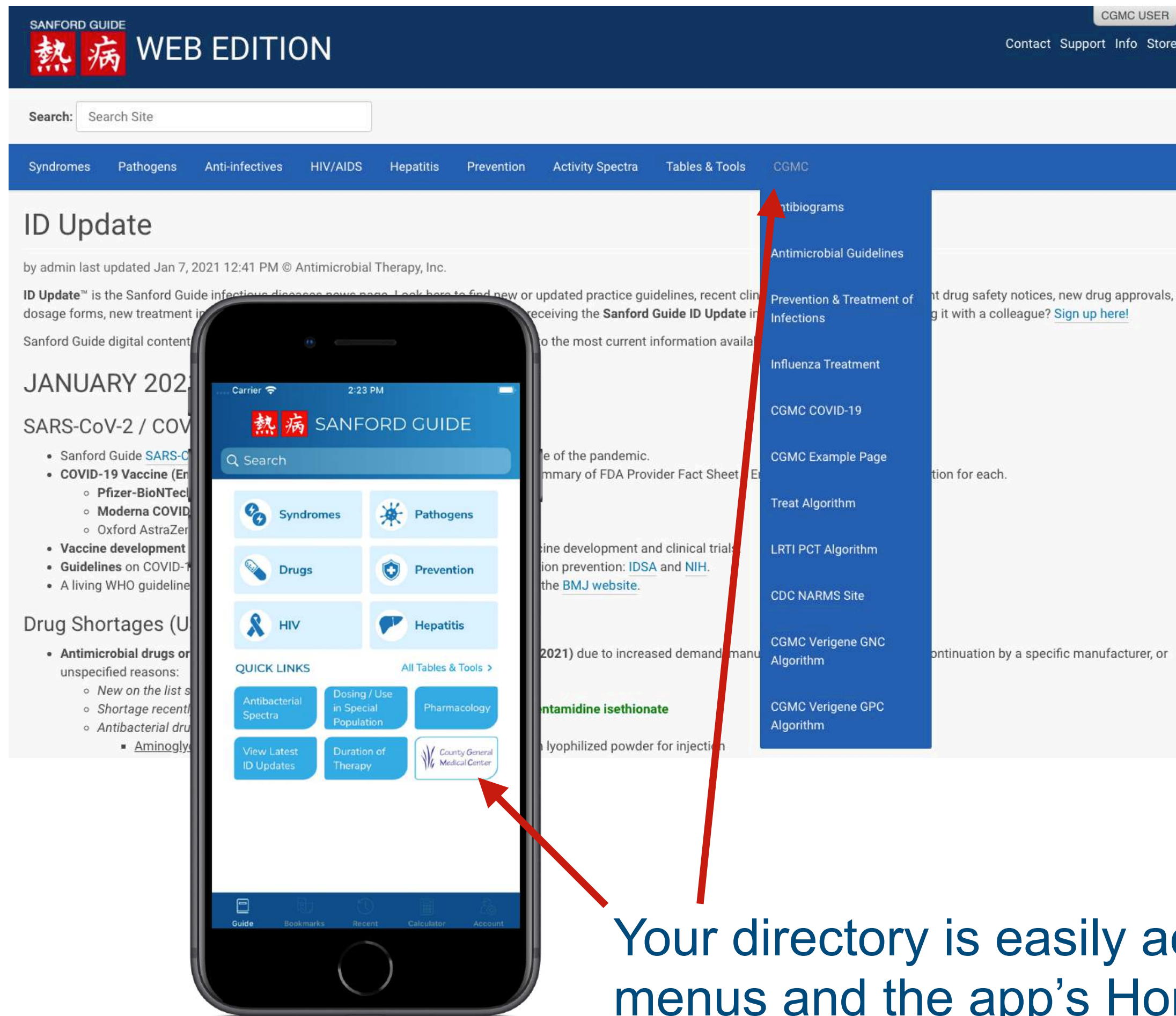
Five core features

- Institutional directory w/ your content
- Your guidelines on Sanford Guide pages
- Editorial dashboard to track updates
- Your antibiograms alongside our activity spectra
- In-app Announcements for drug shortages, etc.



Accessible. Concise. Reliable.

Populate your institutional directory with all your guidelines



Your directory is easily accessible from the web's menus and the app's Home screen

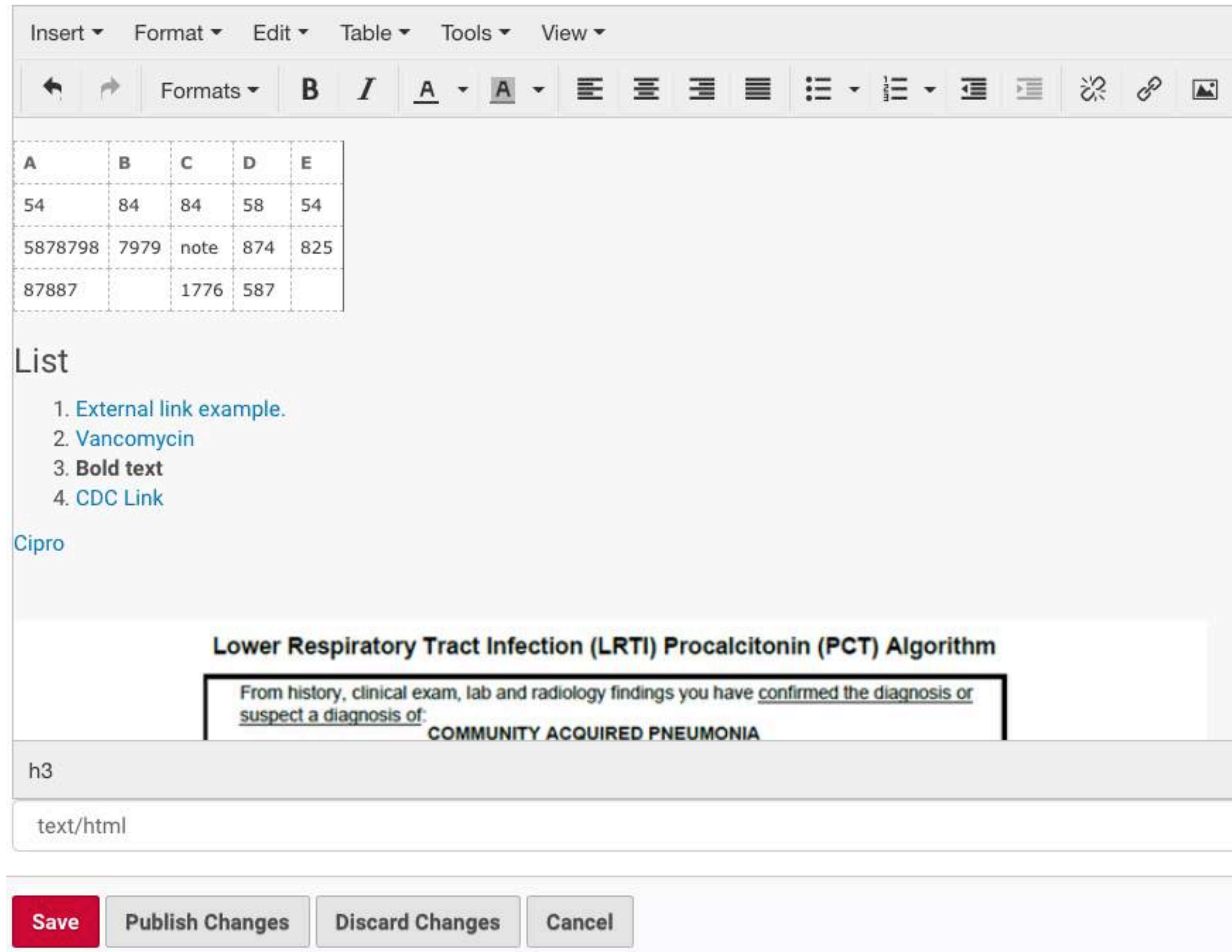
- Custom directory, accessible from the home page of the web site and the app
- Contains as much content as you want, including
 - Web pages
 - Links to internal or external pages
 - Links to your antibiograms
 - Decision trees/treatment algorithms
 - PDFs for viewing or download
- Content can be organized into subfolders for topic, content type, facility, etc.

Our algorithm tool guides clinicians through decision-making processes

The image shows a vertical flow of decision-making questions. The first question is 'Are you hungry?' with 'Yes' and 'No' buttons. The second question is 'What is your role?' with 'Resident', 'Mid-career', and 'Supervisory' buttons. The third question is 'Have you already had more than one cookie?' with 'Yes' and 'No' buttons. Below the third question, it says 'No cookie for you!'.

Accessible. Concise. Reliable.

Content is easily edited with our WYSIWYG editor



The screenshot displays a WYSIWYG editor interface with a menu bar (Insert, Format, Edit, Table, Tools, View) and a toolbar containing icons for undo, redo, bold, italic, text color, background color, bulleted list, numbered list, indent, outdent, link, unlink, and image. The main editing area contains a table with 5 columns (A-E) and 4 rows of data. Below the table is a 'List' section with four items: '1. External link example.', '2. Vancomycin', '3. Bold text', and '4. CDC Link'. Underneath the list is the word 'Cipro'. A highlighted section titled 'Lower Respiratory Tract Infection (LRTI) Procalcitonin (PCT) Algorithm' contains the text: 'From history, clinical exam, lab and radiology findings you have confirmed the diagnosis or suspect a diagnosis of: COMMUNITY ACQUIRED PNEUMONIA'. Below this section, the text 'h3' and 'text/html' are visible. At the bottom, there are four buttons: 'Save' (red), 'Publish Changes', 'Discard Changes', and 'Cancel'.

A	B	C	D	E
54	84	84	58	54
5878798	7979	note	874	825
87887		1776	587	

List

1. External link example.
2. Vancomycin
3. **Bold text**
4. CDC Link

Cipro

Lower Respiratory Tract Infection (LRTI) Procalcitonin (PCT) Algorithm

From history, clinical exam, lab and radiology findings you have confirmed the diagnosis or suspect a diagnosis of: COMMUNITY ACQUIRED PNEUMONIA

h3

text/html

Save Publish Changes Discard Changes Cancel

- Editors can make changes at any time
- With our user-friendly editor, it's easy to add
 - Text formatting (bold, italic)
 - Text colors & highlighting
 - Headers
 - Bulleted and numbered lists
 - Hyperlinks to Sanford Guide pages
 - Hyperlinks to your pages
 - Hyperlinks to external pages
 - Hyperlinks to create emails
 - Images
 - Tables
- Changes go live in minutes or hours - not weeks or months
- Editors can save work for later review or editing

Accessible. Concise. Reliable.

SANFORD GUIDE



Add your guidelines to any Sanford Guide syndrome, pathogen, or drug page


Meropenem

Meropenem, Merrem

Sanford Guide CGMC

Local Hospital Guidelines

last modified Nov 12, 2020 12:17 PM



Requires ID Consult

Relative cost:
\$\$\$\$

Consider alternatives:

- [Dorpenem](#)
- [Imipenem](#)

Other Guidelines:

- [CDC](#)
- [IDSA](#)

	Criterion	Criterion	Criterion	Criterion
Dose	125	250	500	750
Dose	250	500	750	1000
Dose	375	500	875	1125
Dose	500	750	875	1250


- When users visit any page, your guidelines appear first, so you can highlight information such as formulary restrictions, susceptibility issues, cost data, and more
- Users can tap on the Sanford Guide tab to see full Sanford Guide information on the topic
- Formatting tools allow you to change fonts, add colors, insert tables, link to internal or external pages, and more.
- Your content can be customized and edited without the need for IT intervention using our WYSIWYG editor
- Your edits go live instantly, or can be saved for later review and publication

Accessible. Concise. Reliable.

SANFORD GUIDE



Keep track of your edits with our Editorial Dashboard

SANFORD GUIDE  Stewardship Assist Dashboard

[Download CSV](#)

Baseline							Working Copy			
Type	Title	Owner	Last Modified	Modified By	State	Link	Last Modified	Modified By	Link	
Alert	Mon Health Guidelines - Ciprofloxacin	cgmc-editor-sanfordguide-com	2021-01-07 09:31	cgmc-editor-sanfordguide-com	Published	View	N/A	N/A	View	
Standalone	Antimicrobial Guidelines	cgmc-editor-sanfordguide-com	2021-01-07 09:29	cgmc-editor@sanfordguide.com	Published	View	N/A	N/A	View	
Alert	Formulary Restriction - Pneumonia, Communi...	cgmc-editor-sanfordguide-com	2020-12-29 08:09	cgmc-editor@sanfordguide.com	Published	View	N/A	N/A	View	
Alert	Not on KAAMC Formulary - Ceftaroline	cgmc-editor-sanfordguide-com	2020-12-29 08:06	cgmc-editor@sanfordguide.com	Published	View	N/A	N/A	View	
Alert	CGMC Stewardship Guidelines - UTI, Acute, U...	sgrimley@sanfordguide.com	2020-12-21 14:23	cgmc-editor@sanfordguide.com	Published	View	N/A	N/A	View	
Alert	Formulary Restriction - Doripenem	cgmc-editor-sanfordguide-com	2020-12-15 14:22	cgmc-editor@sanfordguide.com	Published	View	N/A	N/A	View	
Alert	Local Guidelines - Amoxicillin	cgmc-editor-sanfordguide-com	2020-12-15 12:23	cgmc-editor@sanfordguide.com	Published	View	N/A	N/A	View	
Alert	ASP Alert - Vancomycin	cgmc-editor-sanfordguide-com	2020-12-01 10:25	cgmc-editor@sanfordguide.com	Published	View	N/A	N/A	View	
Alert	Local Hospital Guidelines - Meropenem	cgmc-editor-sanfordguide-com	2020-11-12 12:17	cgmc-editor@sanfordguide.com	Published	View	N/A	N/A	View	
Standalone	Treatment of Influenza 2018-2019	cgmc-editor-sanfordguide-com	2020-11-04 12:37	cgmc-editor@sanfordguide.com	Published	View	N/A	N/A	View	
Alert	Formulary Restriction - Azithromycin	cgmc-editor-sanfordguide-com	2020-09-24 11:30	cgmc-editor-sanfordguide-com	Published	View	N/A	N/A	View	
Alert	ASP Alert - CDC Immunization Schedules	cgmc-editor-sanfordguide-com	2020-09-03 10:37	cgmc-editor@sanfordguide.com	Published	View	N/A	N/A	View	
Alert	Formulary Restriction - Cefepime	cgmc-editor-sanfordguide-com	2020-09-01 13:12	cgmc-editor-sanfordguide-com	Published	View	N/A	N/A	View	
Alert	County General Guidelines - Cefazolin	cgmc-editor-sanfordguide-com	2020-08-24 10:02	cgmc-editor@sanfordguide.com	Published	View	N/A	N/A	View	
Alert	ASP Alert - Pseudomonas aeruginosa	cgmc-editor-sanfordguide-com	2020-08-19 12:23	cgmc-editor-sanfordguide-com	Published	View	N/A	N/A	View	
Standalone	Process for Ordering Antimicrobials at CGMC	cgmc-editor-sanfordguide-com	2020-08-18 12:41	cgmc-editor@sanfordguide.com	Published	View	N/A	N/A	View	

- Your hospital or health system's AMS editorial team can make edits at any time
- Editors can easily view a comprehensive list of pages and alerts, and organize them by
 - Creator
 - Editor
 - Modification date
 - Draft vs published version
- Dashboard data can be exported in csv format for offline review

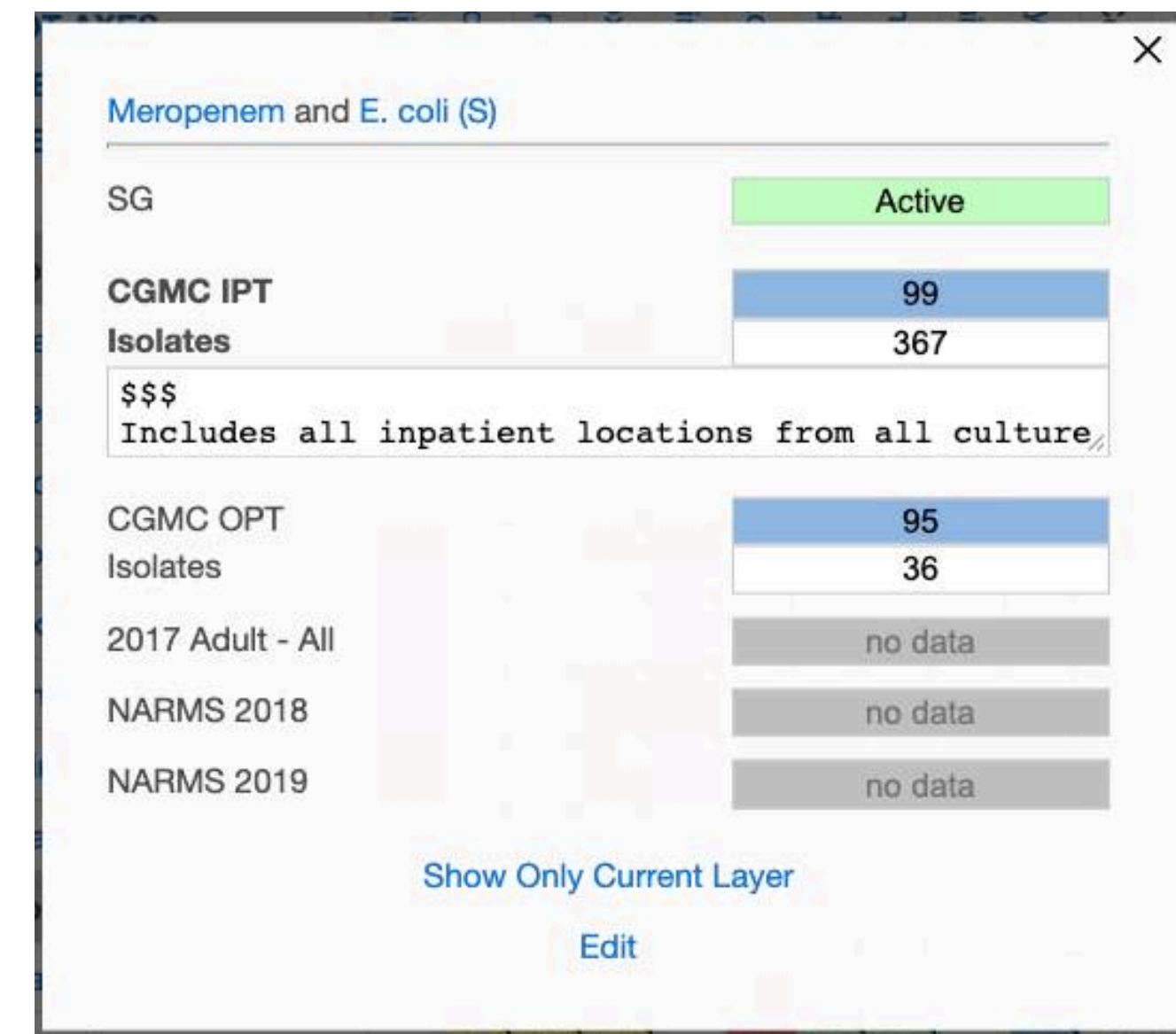
Accessible. Concise. Reliable.

SANFORD GUIDE



Display your antibiograms in our interactive Spectra of Activity

CGMC Inpatient	Pan	G.	F.	P.Ceph	AG						
ADD ALL	Ampicillin	Pip-Tazo	Meropenem	Ciprofloxacin	Cefazolin	Ceftaxone	Ceftazidime	Cefepime	Gentamicin	Tobramycin	Clear All Columns
Aerobic gram negative bacilli, enterobacter											
C. freundii	79	100	79	85	71	72	100	92	89	X	
E. aerogenes	89	100	95				100	100	98	X	
E. cloacae complex	83	100	97				99	97	85	X	
E. coli (S)	58	99	53	86	63	85	83	42	X		
K. oxytoca	0	84	83	25	86	87	100	97	91	X	
K. pneumoniae	0	88	98	77	69	76	82	87	86	X	
P. mirabilis	73	100	100	73	5	92	94	88	89	X	
Serratia marcescens	100	98	98		100	100	100	100	100	X	
Aerobic gram negative bacilli, non-fermenter											
A. baumannii cmplx	94	100	100		53	94	88	100	100	X	
P. aeruginosa	75	79	74		49	86	86		95	X	
Clear All Rows	X	X	X	X	X	X	X	X	X	X	X



- Display only the drugs and pathogens you choose
- Unlimited number of data sets, so each ward, facility, or year can have its own view
- Color coded to highlight treatments of greatest susceptibility

- Tap on any interaction for detailed information including
 - Isolates used
 - Notes pertaining to the interaction
 - Sanford Guide recommendation
 - Susceptibility from other data sets
 - Links to drug and pathogen information

Accessible. Concise. Reliable.

SANFORD GUIDE



Alert Your Providers with In-App Announcements

- Notify providers of drug shortages, guideline changes, etc.
- Create announcements with a user-friendly editor
- Schedule for later or publish instantly
- Sent to users in real time
- Retained in the app for later reference
- Can revoke from all users at any time

Edit Meta Logs (2)

Announcement Title: (up to 200 characters long)

Drug Shortage Alert

Announcement Content:

Edit View Insert Format

← → Bold B I U ~~S~~ A

Doxycycline Oral Suspension in short supply ([More information](#))

Available Products

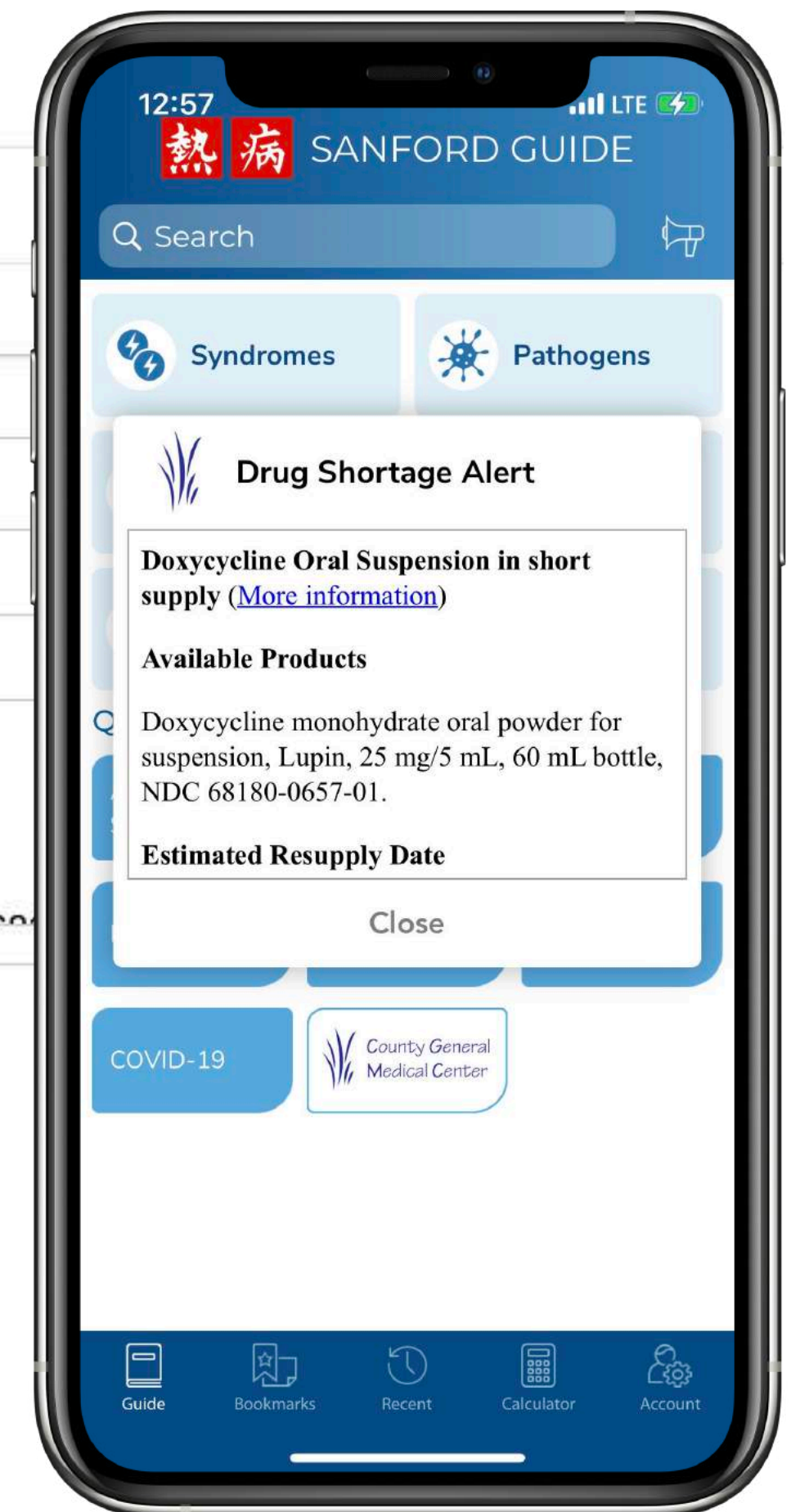
Doxycycline monohydrate oral powder for suspension, Lupin, 25 mg/5 mL, 60 mL bottle, NDC 68180-0657-01.

P » STRONG

Send Announcement To: County General Medical Center

That is using a license for: --Any Product--

Update Announcement Reset Cancel



Accessible. Concise. Reliable.

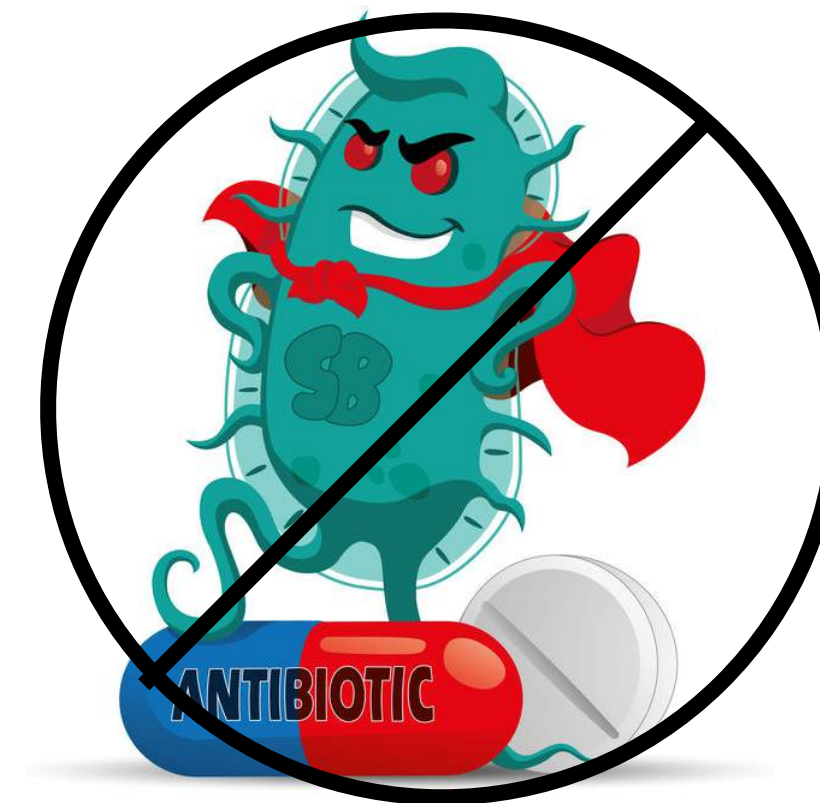
SANFORD GUIDE



What are the benefits?



- Save time
- Save money
- Promote antimicrobial stewardship
- Reduce medical errors
- Improve patient outcomes
- Cut down on readmissions



Accessible. Concise. Reliable.

Is there evidence this will help?



A recent study demonstrated how Sanford Guide with Stewardship Assist improved antimicrobial stewardship knowledge and performance among medical residents and interns.

The study showed that:

- 95% of participants preferred the app to a paper guide
- 88% reported that it was easy to use the app
- 68% reported that the app directly improved their knowledge of local resistance patterns
- Weekly training sessions that incorporated the app resulted in antibiogram usage increasing from 34% to 90%

Brooke et al.. IDWeek 2021 session 86 - Making the APPropriate Choice: Utilization of a Smartphone Application to Optimize Antimicrobial Decisions Among Internal Medicine Trainees

Accessible. Concise. Reliable.



What are other benefits?

Sanford Guide with Stewardship Assist can help you meet **CDC Core Elements** for Hospital Antibiotic Stewardship Programs, **CMS Conditions for Participation**, and **Joint Commission** requirements, and adhere to **IDSA and SHEA Recommendations**:

- Demonstrates prioritization of antimicrobial stewardship through support of its ASP (influencing financial and IT resources to support AMS).
- Demonstrates usage of and adherence to nationally recognized guidelines and best practices for antimicrobial stewardship.
- Makes it easy to document evidence-based use of antibiotics.
- Makes it easy to develop and approve, and document protocols using the Editorial Dashboard and version control.
- Assists with implementation of guidelines for CAP, UTI, SSTI, and avoidance of inappropriate urine testing for patients w/o UTI symptoms.
- Incorporates computerized clinical decision support at the time of prescribing.
- Disseminates guidelines in an electronic format.

Accessible. Concise. Reliable.



Why Sanford Guide?

- 50+ years of leadership & trust
- Geographically diverse editorial board
- Fastest time-to-answer
- Top-rated mobile apps
- Family-owned small business
- Responsive and dynamic
- You're already using it!



Accessible. Concise. Reliable.



 **SANFORD GUIDE** with
Stewardship Assist 

More information

www.sanfordguide.com/stewardship-assist

stewardship@sanfordguide.com

Accessible. Concise. Reliable.

SANFORD GUIDE





Accessible. Concise. Reliable.

